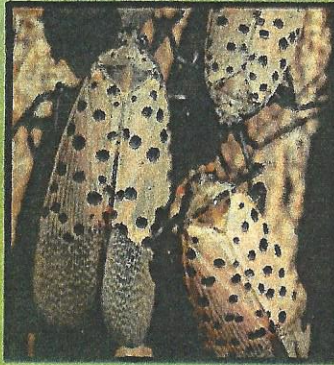
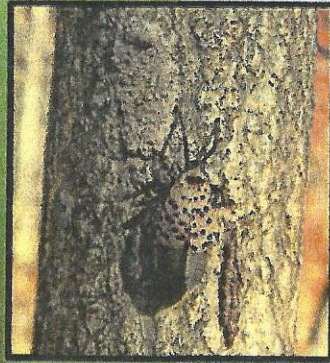


Autumn



Adults: July 24-December



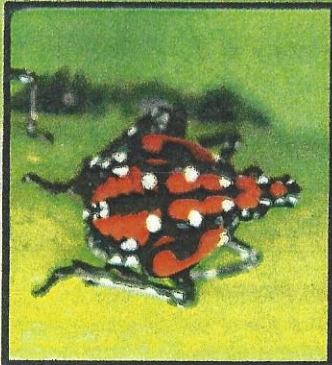
Egg Laying:
September - November



Eggs: Late September-June

Winter

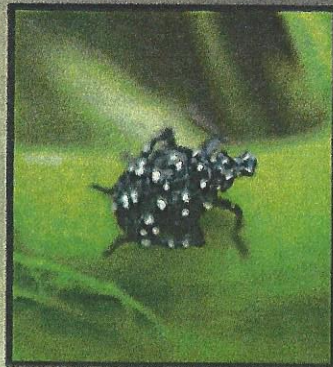
Life Cycle One Generation Per Year



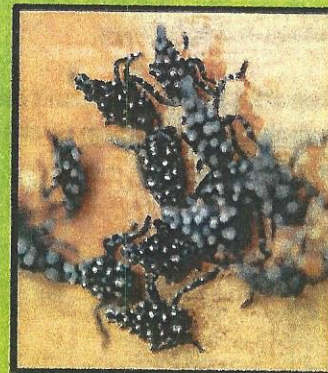
Fourth Instar:
July - September



Hatch and 1st Instar:
Late April- June



Third Instar: June - Mid-July



Second Instar: May - June

Summer

Spring



UNIVERSITY OF DELAWARE
COOPERATIVE
EXTENSION

This institution is an equal opportunity employer.



If allowed to spread, this pest could seriously impact the grape, orchard, hardwood, and nursery and landscape industries. The insect can also cause damage to high-value ornamentals in home landscapes and can affect quality of life for residents. In addition, due to quarantines in other states, interstate commerce will be impacted if the pest is transported out of the Delaware quarantine area.

Trees and plants that have been known to be affected are:

- Apples
- Plums
- Hops
- Cherries
- Grapes
- Peaches
- Nectarines
- Apricots
- Almonds
- Pine Trees
- Oak Trees
- Walnut Trees
- Poplar Trees
- Willow Trees



An un-hatched spotted lanternfly egg mass on the bark of a ornamental street tree.

How Can You Help?

If you find a spotted lanternfly, there are several ways you can help us stop the #HitchHikerBug:

Take a picture: With the GPS function turned on your smartphone or a camera with GPS, take a photograph of any life stage (including egg masses). Upload your photograph to Facebook or Instagram, using the hashtag #HitchHikerBug. If you don't have GPS capabilities and/or access to social media, submit the photograph via email to HitchHikerBug@delaware.gov and include your name, contact information, and the address or georeference of where the photo was taken.

1. **Collect a specimen:** Suspected specimens of any life stage can be collected and placed in a vial or plastic zip-lock bag with the name and contact information of the collector, and turned into the Delaware Department of Agriculture CAPS program for verification. This insect is considered a threat to some crops and early detection is vital for the protection of Delaware businesses and agriculture.

Report a site: If you can't take a specimen or photograph, send an email to HitchHikerBug@delaware.gov, [submit using this form](#) or call (302) 698-4632 with a message detailing the location of the sighting and your contact information.



A spotted lanternfly egg mass on a street lamp post.